

Narrative Set up

The player receives an old envelope, with clues inside.

On the outside of the envelope is a piece of paper with a message taped to the front. The page reads: "So I was cleaning out the manor's attic the other day and look at what I found. It's this strange old package that seems like it may have once belonged to someone in our family. You think it's related to some of the weird stories we've heard growing up? I couldn't make heads or tails of it though it's all coded in some odd way. You're always good at solving these kinds of things, so I'm leaving it in your capable hands. Let me know if you manage to figure it out!" - Jillian

Puzzle 1: Family Tree

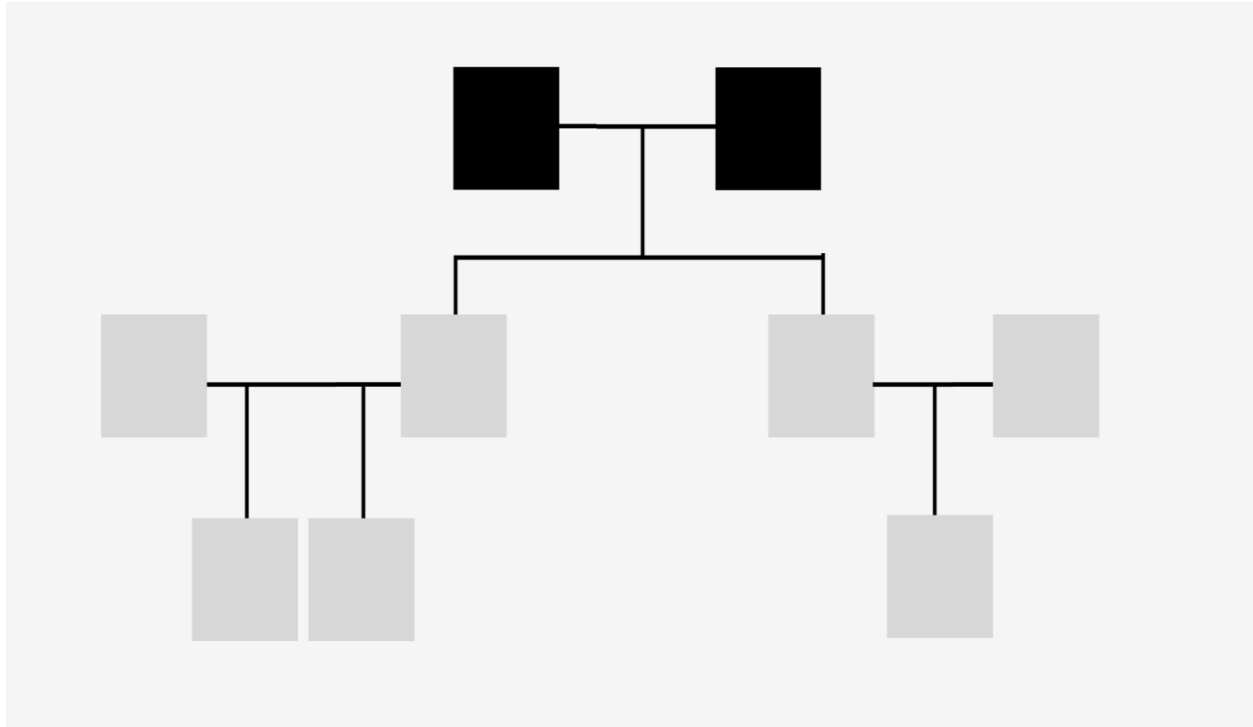
This is the first puzzle of the game.

Clue 1: A faded parchment paper

"Our story begins with the goddess of discord, Eris, throwing a golden apple inscribed with "for the fairest" into the world. Hera, Athena, and Aphrodite all wanted the apple. To solve the problem, Zeus appointed Paris as the judge to determine who should get the apple. Each goddess bribed Paris with various benefits, where Hera promised power, Athena offered wisdom, and Aphrodite presented love."

Clue 2: A blank family tree

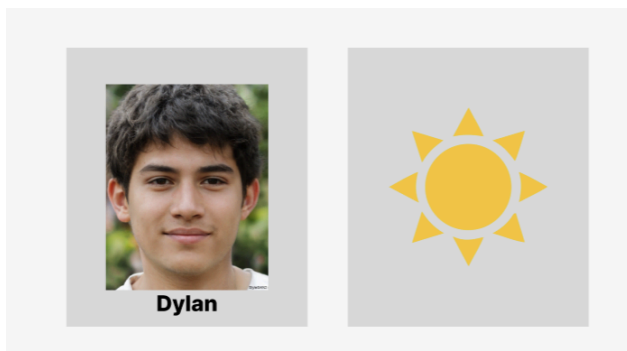
"Don't mind the blacked out spaces, they have long since passed. The characters in this story include Athena, Apollo, Ares, Aphrodite, Demeter, Poseidon, and Dionysus."



1. Athena and Aphrodite are siblings
2. The mother of Dionysus is also the sibling of Apollo's parents.
3. Ares is not the son of the goddess of wisdom
4. The goddess of wisdom is married to the god of the sea.
5. Athena's children do not share a parent with Apollo.
6. The goddess of harvest is the niece of the goddess of love.

Clue 3: Series of family portraits

Each the same size as the blanks on the family tree, shoulders up of a photo of a family member with their name written at the bottom.



On the back of each portrait is a symbol.

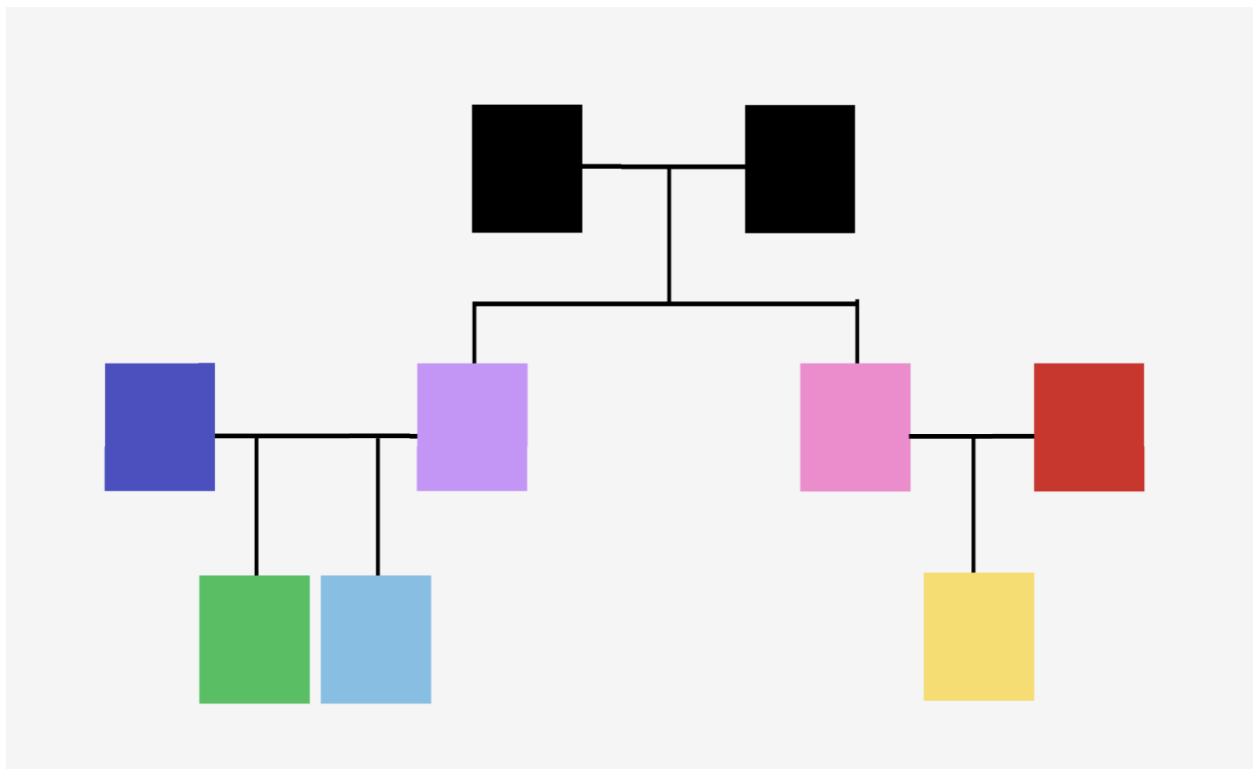
The symbols include:

- Ocean wave
- Book and glasses

- Wine glass
- Wheat
- Heart
- Sword
- Sun

Solution

Players figure out where the gods and goddesses should be located on the family tree based on the logic clues given.



Dark blue: Poseidon

Purple: Athena

Green: Dionysus

Light blue: Demeter

Pink: Aphrodite

Red: Ares

Yellow: Apollo

Players decipher what each symbol represents in Greek mythology (what each god/goddess is well known for) and figure out which family member is which deity. Players then match the family member's card to each god/goddesses' position on the family tree. The answer to this puzzle helps with other puzzles later in the game since players learn how each family member is related.

Puzzle 2: Golden Apple

This puzzle happens later on in the game, there would be a few more puzzles between the family tree to this one that builds up more details and leads to more clues being unlocked.

Clue 1: A last will

"It is with great sorrow that I leave the last portion of my fortune to [illegible].
The inheritance section is illegible with ink spilled all over it.

On the back of the paper is a drawing of a golden apple with a poem written on it:

*An unclaimed **Tmulsy** sits in the light,*

***rOqenoq** ignited, the gods began to fight.*

*Who may **pbTpgbvb** the item and tell the tale,*

*The prize hard-won, the coveted **uMdbf**.*

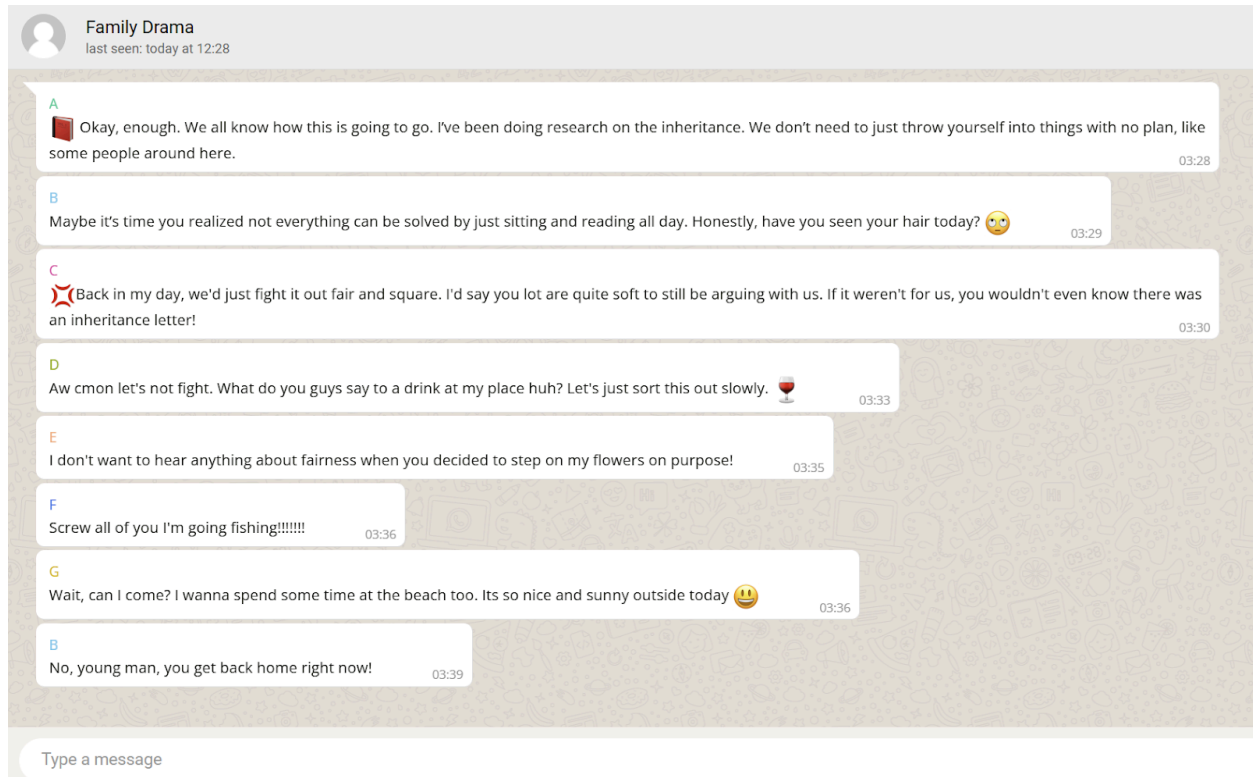
*Then one morning, at the crack of **tDwk**,*

***Yiggr** echoed, "The gold fruit is now gone!"*

*In their **nAkfo** none could see,*

*In the shadows, a beauty **dFooq** .*

Clue 2: Group Chat logs



Solution

Players first need to examine the chat logs and realize the order in which the characters speak. They examine the characteristics of each of the member's speech to align them with a character.

Then they look at the list of gibberish in the poem and use a keyword cipher to decode each of the words. The keyword used for each line is the order of messages in the group chat. For example, the first word Bounty is decoded with the keyword aphrodite.

- Bounty Tmulsy
- dEsires rOqenoq
- reTrieve pbTpgbvb
- gRail uMdbf
- dAwn tDwk
- Yells Yiggr
- pAnic nAkfo
- fLees dFooq

The capitalization in the gibberish is also important. In the end when all words are decoded, the capitalization spells the word "betrayal". Players also learn the story of what has happened to the inheritance through the poem.